

WE ARE SIKKA

A large, dark blue, curved graphic element that starts from the left edge and curves upwards and to the right, creating a sense of depth and movement. It serves as a background for the main text.

**CLEVER MEASUREMENT
SOLUTIONS FOR THE MARKET
SUCCESS OF OUR CUSTOMERS.**

120 YEARS OF MEASUREMENT

Temperature

Flow

Pressure



TOGETHER SUCCESSFUL

YOUR CHALLENGE IS OUR OBLIGATION

~400

STAFF

68 M

EUR TURNOVER 2023

67%

EXPORT RATE

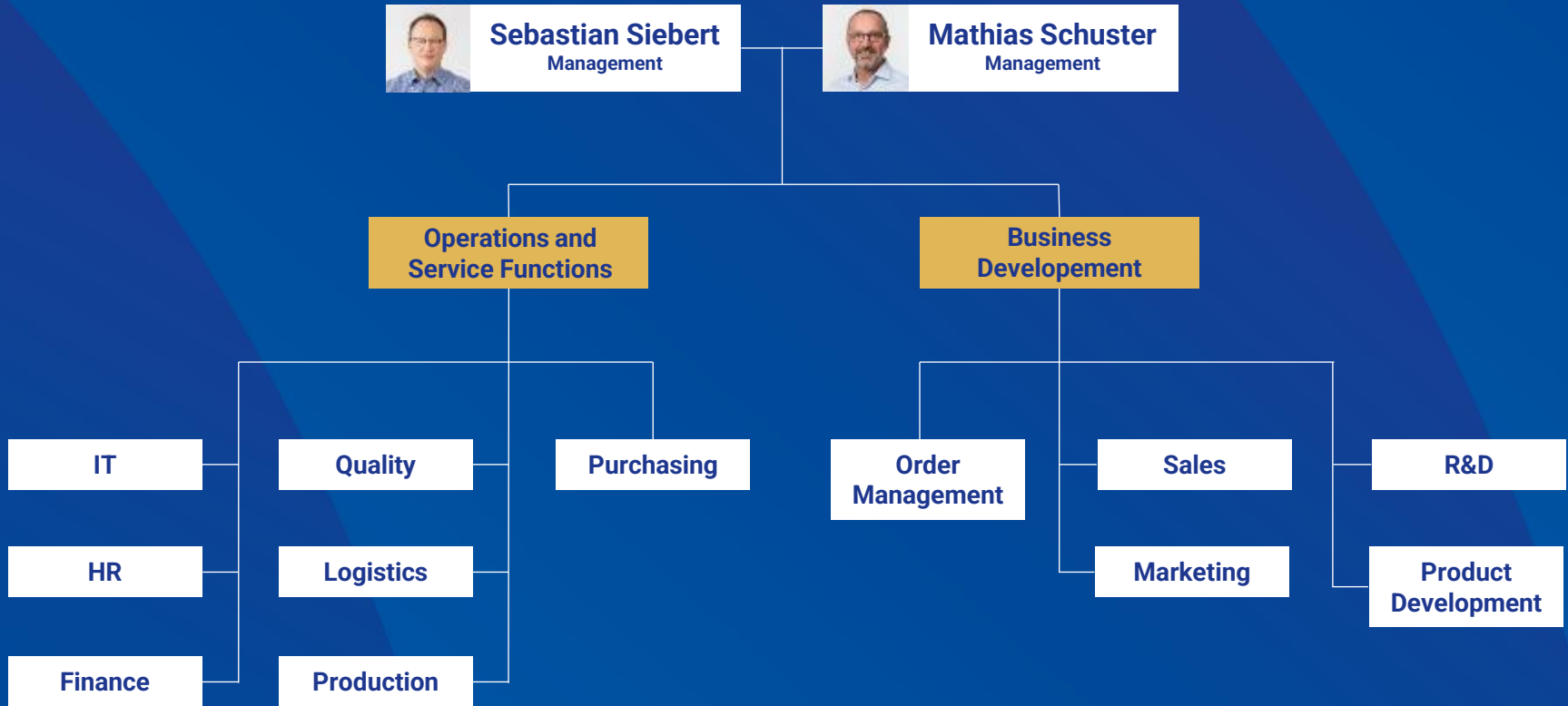
Sebastian Siebert Mathias Schuster
Managing Directors



A large, dark blue, curved shape, resembling a dome or a large drop, is positioned in the upper half of the image. It has a subtle gradient and a soft shadow, giving it a three-dimensional appearance. The rest of the background is solid black.

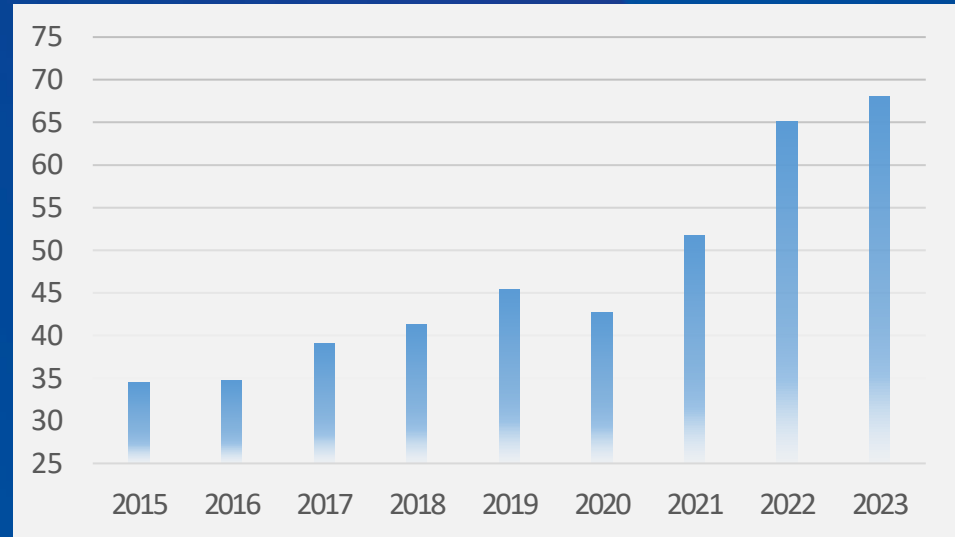
**WE ARE A TRADITIONAL
COMPANY ON THE WAY
TO THE FUTURE.**

ORGANIZATION



Sales development

- **Dynamic development**
- **Sustainable market segments**
- **Innovative products**



FROM THE HEART OF EUROPE TO THE WORLD



PRODUCT RANGE

SIKA Invention



Thermometer

- HVAC
- Industry



Temperature Sensors

- HVAC
- Machines



Dial thermometer

- Marine
- Industry

SIKA Invention



Temperature calibrators

- Calibration laboratories
- Marine



Pressure calibration technology

- Marine
- Industry

SIKA Invention



Flow switch

- Mechanical engineering
- Heating technology



Vortex-Flow sensors

- Heat pumps
- Heating technology

SIKA Invention



Turbine-Flow sensors

- Water technology
- Medicine



Magnetic-inductive Flow sensors

- Industry
- Mechanical engineering



Magnetic-inductive Flow sensors

- Water technology
- Dosing

Clever measurement technology for the market success of our customers

- We know what works well.
- We know what is best to use.
- Because we ask our customers.



What counts is in the field

- Through our customers, we know how and where our products are used.
- That's why they work so well and last so long.



Our aspiration behind it

- **Knowing how quality is created**
- **Product qualification for service life, vibration, temperature change, shock, media influence, installation situation.**
- **A lot of commitment for best quality.**

Services

- **Recalibration**
- **Accredited DAkkS laboratory**
- **Test benches for endurance tests, media tests, shock tests**
- **X-ray and other tests**



Quality is in our blood

- **Organization and people**
- **100 % final inspection**
- **Batch code / serial number**
- **Complete traceability**
- **Top QA documentation**



CERTIFIED PROCESSES

<p>These approvals and certifications are a selection. They are product-dependent and refer to individual SIKA products.</p>						

THAT IT FITS

CO-ENGINEERING OF OUR
PROVEN SENSOR TECHNOLOGY
TO THE RESPECTIVE
APPLICATION.



Marine

for 80 years

- Temperature measurement in exhaust gas, oil, cooling water, and bearing bushings
- Quality assurance through calibration technology



Machinery / plant engineering for 25 years

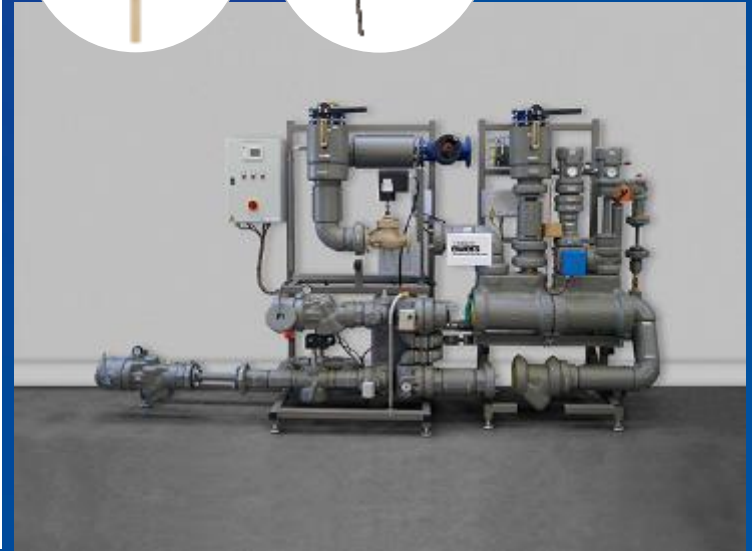
- Laser cooling
- Cooling units
- Construction machinery
- Plant temperature control



HVAC

for 45 years

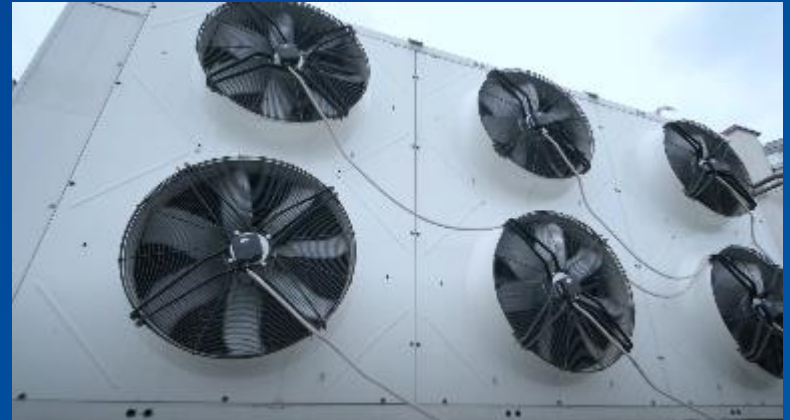
- Water treatment
- Hot water stations
- District heating stations



KNOW HOW

HVAC / Heat Pumps

- Residential and Industrial Heat Pumps



Calibration in Laboratories & in the field



TEMPERATURE

- Best measurement uncertainty budget
- Easy operation
- Calibration procedures for automatic calibration
- Communication-capable with Ethernet, mobile phone, accessories (e.g. scanner)
- Dry block, calibration bath, surface, infrared
- Combining precision with high processing quality – even at high pressures
- Either air, distilled water or hydraulic oil can be used as the test medium.

PRESSURE



REFERENCES



SIKA Dr. Siebert & Kühn GmbH & Co. KG // Struthweg 7 – 9 // 34260 Kaufungen/Germany // info@sika.net // www.sika.net